

استطلاع  
صحيفة الرأي في عيون المواطن الأردني

2006

---

(800)

(400)

(300)

( ) ( )  
(100) ( )

%65.25

(1)

: .1

.%43.75

(1)

%		
65.25	522	
34.75	278	
100	800	

(20)

%3.5 (2)

: .2

(29-20) %23.5

(49-40) %19.1

%18.6

(39-30)

%16.4 (59-50)

(50) %18.9

(2)

%		
3.5	28	20
23.5	188	29-20
18.6	149	39-30
19.1	153	49-40
16.4	131	59-50
18.9	151	60
100	800	

(3) : .3  
%0.9  
%17.9 %1.6  
%51.1 %13.8  
%.%14.8

(3)

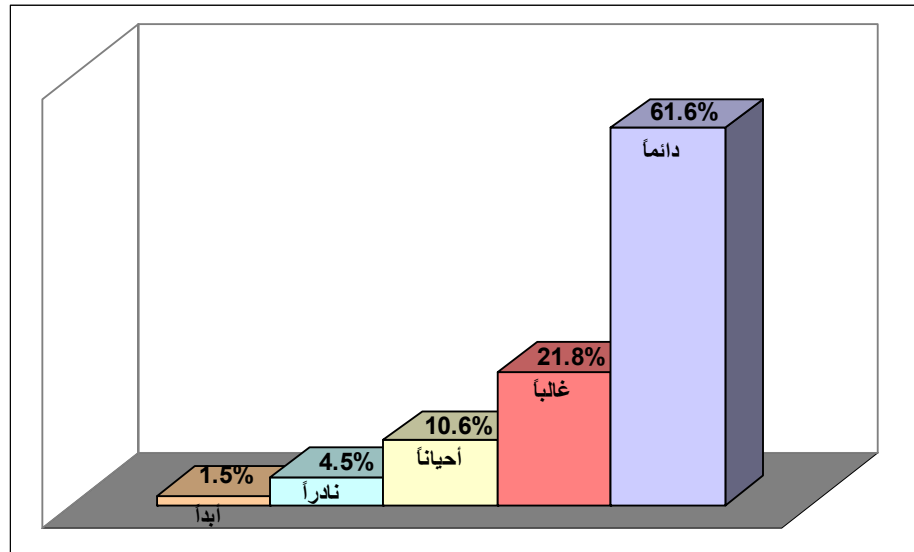
%		
0.9	7	
1.6	13	
17.9	143	
13.8	110	
51.1	409	
14.8	118	
100	800	

:

-1

(1) 61.6%  
 21.8%  
 4.5% (4)  
 10.6%  
 1.5%

(1)



(4)

%		%		%		
68.0	68	90.0	360	21.7	65	
24.0	24	9.0	36	38.0	114	
8.0	8	1.0	4	24.3	73	
-	-	-	-	12.0	36	
-	-	-	-	4.0	12	

100	100	100	400	100	300	
						-2

(2)

%55.8

%22.6

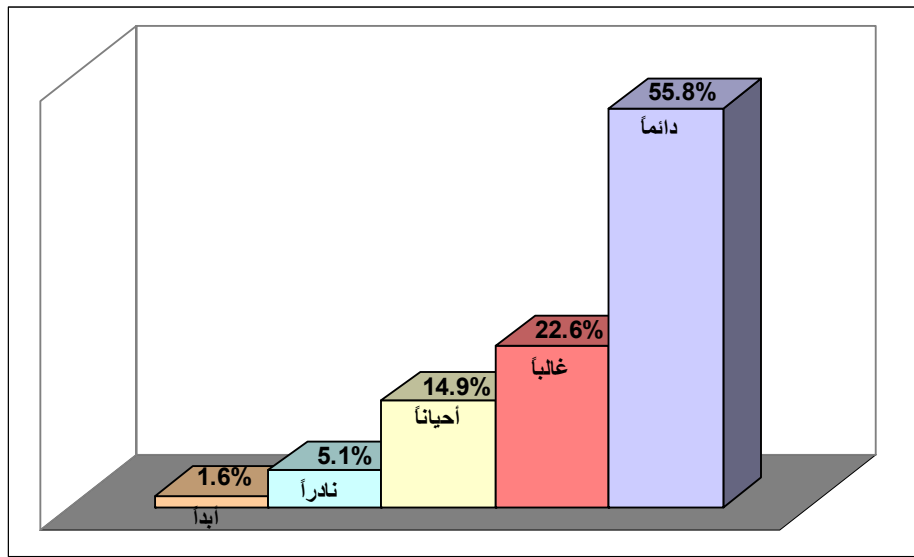
%5.1

(5)

%14.9

%1.6

(2)



(5)

%		%		%		
65.0	65	83.5	334	15.7	47	
28.0	28	15.0	60	31.0	93	
7.0	7	1.5	6	35.3	106	
-	-	-	-	13.7	41	

-	-	-	-	4.3	13	
100	100	100	400	100	300	
						-3

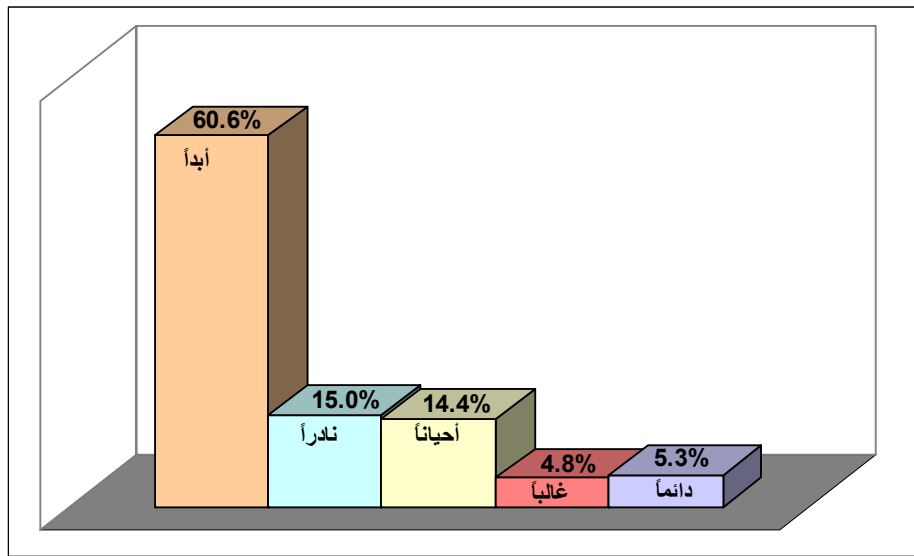
%5.3 (3)

%14.4  
%60.6

%4.8

%15  
(6)

(3)

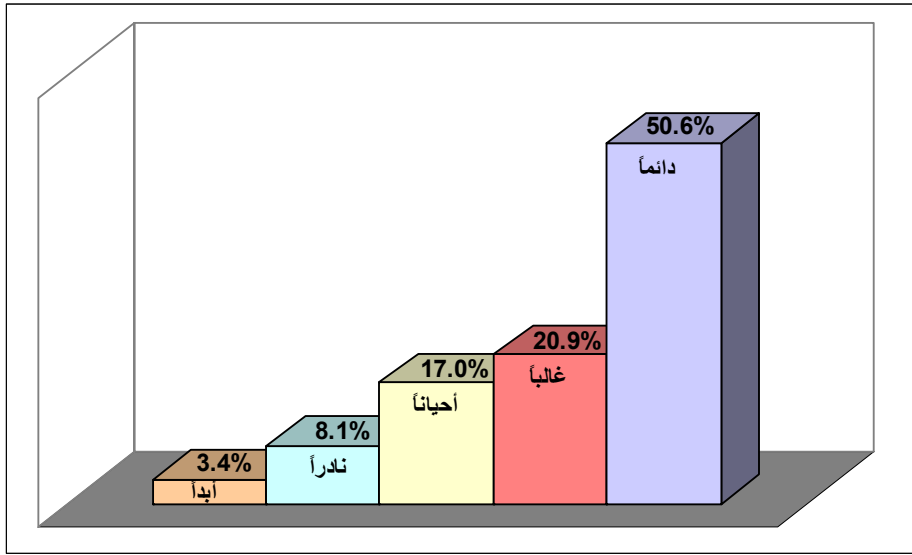


(6)

%		%		%		
7.0	7	4.0	16	6.3	19	
4.0	4	2.5	10	8.0	24	
22.0	22	10.8	43	16.7	50	
13.0	13	12.3	49	19.3	58	
54.0	54	70.5	282	49.7	149	
100	100	100	400	100	300	

(4) 50.6%  
 20.9% 8.1% 17.0%  
 (7) 3.4%

(4)



(7)

%		%		%		
55.0	55	73.0	292	19.3	58	
18.0	18	18.0	72	25.7	77	
21.0	21	6.0	24	30.3	91	
2.0	2	2.3	9	18.0	54	

<b>4.0</b>	<b>4</b>	<b>0.8</b>	<b>3</b>	<b>6.7</b>	<b>20</b>	
<b>100</b>	<b>100</b>	<b>100</b>	<b>400</b>	<b>100</b>	<b>300</b>	

-5

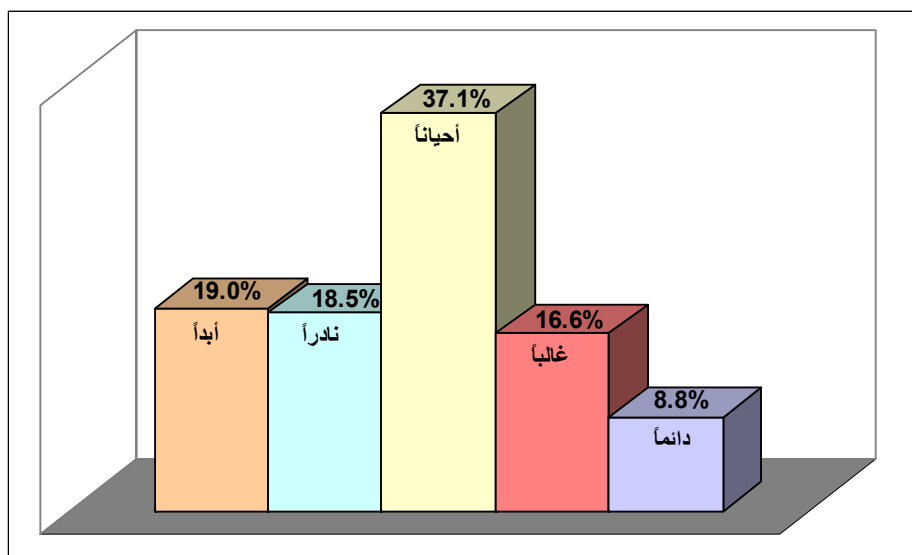
(5)

%8.8 (5)

%18.5 (8)      %37.1      %16.6

   %19

(5)



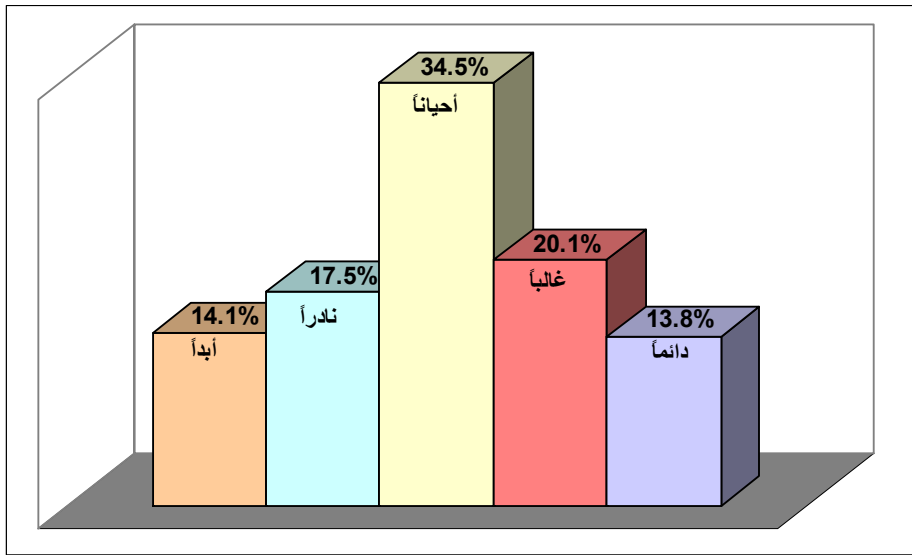
(8)

%		%		%		
<b>7.0</b>	<b>7</b>	<b>8.0</b>	<b>32</b>	<b>10.3</b>	<b>31</b>	
<b>16.0</b>	<b>16</b>	<b>12.0</b>	<b>48</b>	<b>23.0</b>	<b>69</b>	
<b>51.0</b>	<b>51</b>	<b>36.0</b>	<b>144</b>	<b>34.0</b>	<b>102</b>	
<b>13.0</b>	<b>13</b>	<b>18.3</b>	<b>73</b>	<b>20.7</b>	<b>62</b>	
<b>13.0</b>	<b>13</b>	<b>25.7</b>	<b>103</b>	<b>12.0</b>	<b>36</b>	
<b>100</b>	<b>100</b>	<b>100</b>	<b>400</b>	<b>100</b>	<b>300</b>	



(6) %13.8  
 %34.5 %20.1  
 (9) %14.1 %17.5

(6)



(9)

%		%		%		
<b>17.0</b>	<b>17</b>	<b>14.8</b>	<b>59</b>	<b>11.3</b>	<b>34</b>	



51.0	51	52.5	210	19.7	59	
35.0	35	32.0	128	36.3	109	
10.0	10	9.0	36	33.0	99	
4.0	4	5.3	21	7.0	21	
-	-	1.3	5	4.0	12	
100	100	100	400	100	300	
						-8

(8) 39.8%

30.5%

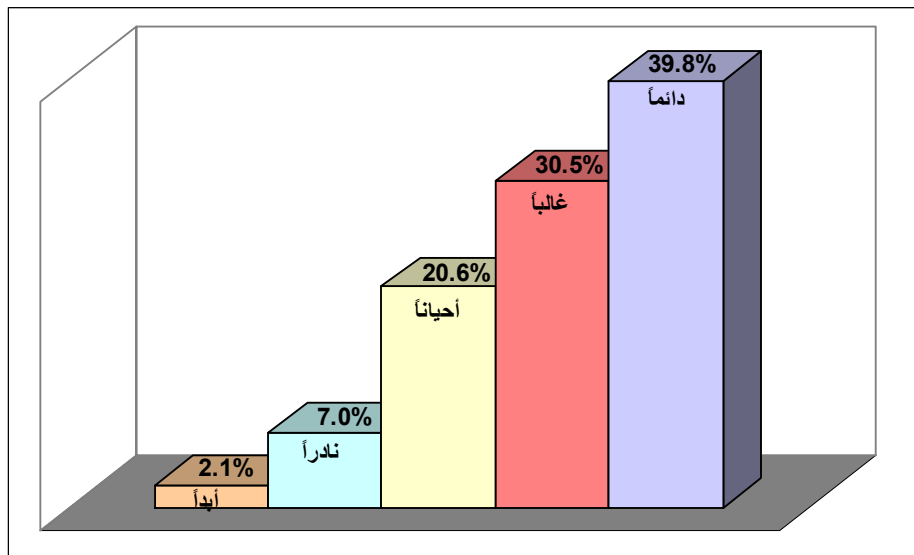
7%

20.6%

(11)

2.1%

(8)



(11)

				%	

%		%				
52.0	52	51.8	207	19.7	59	
30.0	30	28.5	114	33.3	100	
16.0	16	12.0	48	33.7	101	
2.0	2	5.8	23	10.3	31	
-	-	2.0	8	3.0	9	
100	100	100	400	100	300	
						-9

(9) 39.4%

31.3%

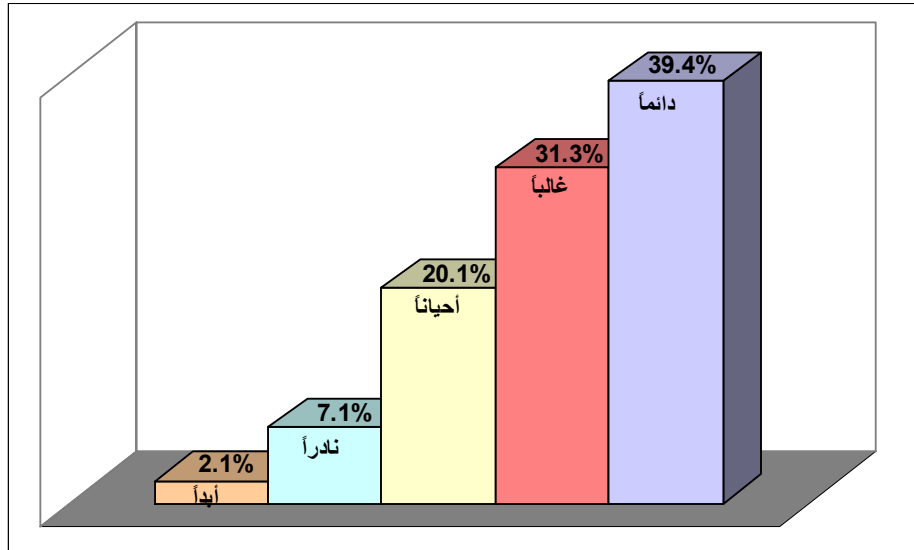
7.1%

20.1%

(12)

2.1%

(9)



(12)

--	--	--	--

%		%		%		
49.0	49	54.0	216	16.7	50	
36.0	36	26.3	105	36.3	109	
13.0	13	12.8	51	32.3	97	
2.0	2	5.5	22	11.0	33	
-	-	1.5	6	3.7	11	
100	100	100	400	100	300	
						-10

(10)

%39.5

%30.6

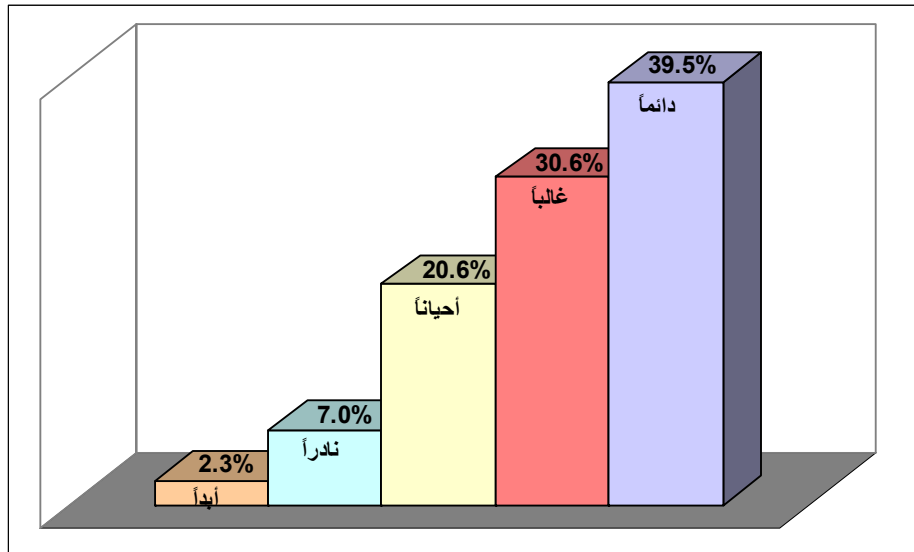
%7

(13)

%20.6

%2.3

(10)



(13)

%		%		%		
56.0	56	53.3	213	15.7	47	
28.0	28	23.8	95	40.7	122	
15.0	15	15.8	63	29.0	87	
1.0	1	5.0	20	11.7	35	
-	-	2.3	9	3.0	9	
100	100	100	400	100	300	
						-11

%36.4 (11)

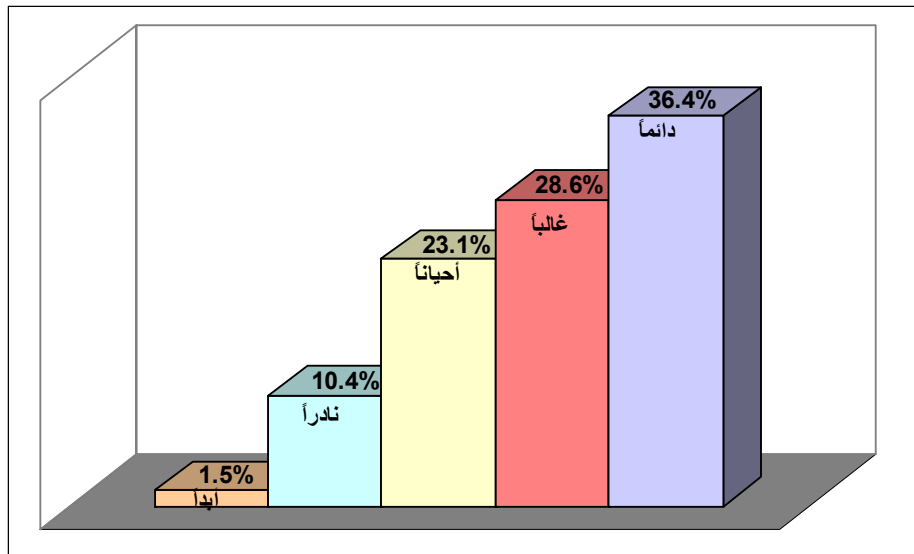
%28.6

%10.4  
(14)

%23.1

%1.5

(11)



(14)

%		%		%		
<b>49.0</b>	<b>49</b>	<b>47.0</b>	<b>188</b>	<b>18.0</b>	<b>54</b>	
<b>25.0</b>	<b>25</b>	<b>24.8</b>	<b>99</b>	<b>35.0</b>	<b>105</b>	
<b>20.0</b>	<b>20</b>	<b>18.3</b>	<b>73</b>	<b>30.7</b>	<b>92</b>	
<b>6.0</b>	<b>6</b>	<b>9.0</b>	<b>36</b>	<b>13.7</b>	<b>41</b>	
<b>-</b>	<b>-</b>	<b>1.0</b>	<b>4</b>	<b>2.7</b>	<b>8</b>	
<b>100</b>	<b>100</b>	<b>100</b>	<b>400</b>	<b>100</b>	<b>300</b>	
						<b>-12</b>

%34.6 (12)

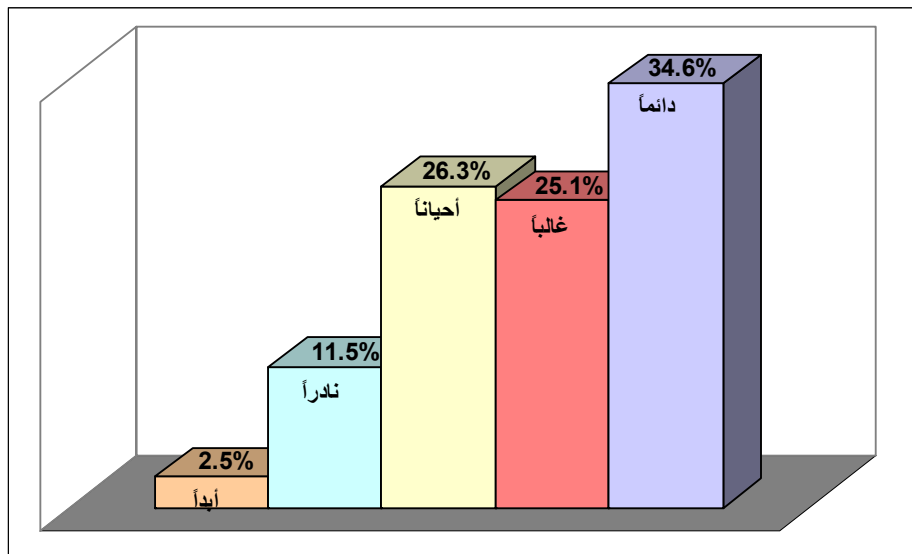
%25.1

%11.5  
(15)

%26.3

%2.5

(12)



(15)

%		%		%		
46.0	46	44.8	179	17.3	52	
31.0	31	21.5	86	28.0	84	
19.0	19	20.3	81	36.7	110	
4.0	4	10.5	42	15.3	46	
-	-	3.0	12	2.7	8	
100	100	100	400	100	300	
						-13

%30.9 (13)

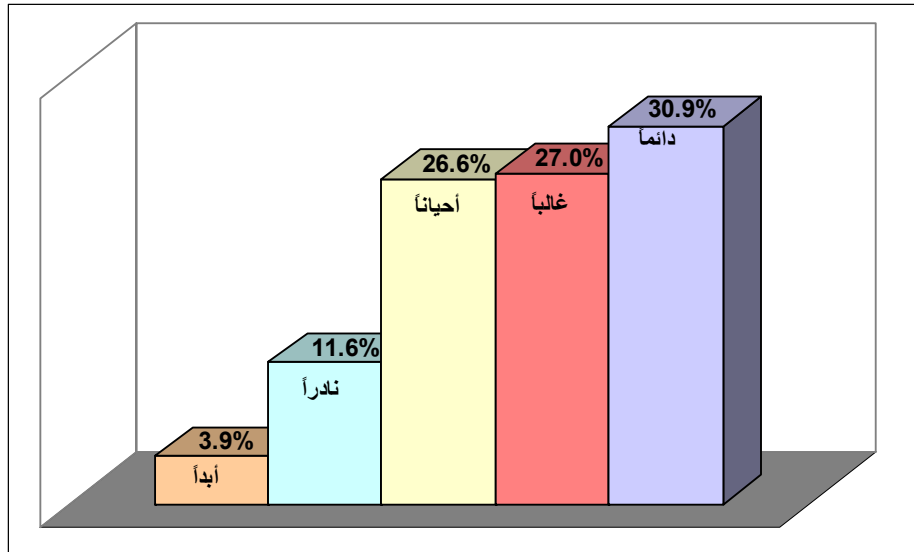
%27

%3.9

%11.6  
(16)

%26.6

(13)





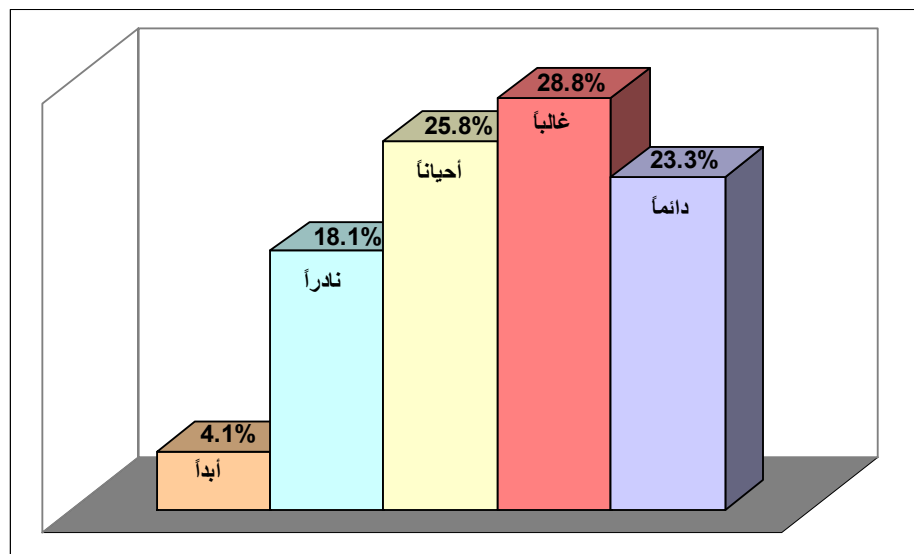
(16)

%		%		%		
45.0	45	38.0	152	16.7	50	
23.0	23	26.0	104	29.7	89	
22.0	22	22.0	88	34.3	103	
8.0	8	10.5	42	14.3	43	
2.0	2	3.5	14	5.0	15	
100	100	100	400	100	300	
						-14

%23.3 (14)

%4.1      %28.8      %18.1      %25.8  
(17)

(14)



(17)

%		%		%		
32.0	32	30.3	121	11.0	33	
34.0	34	28.8	115	27.0	81	
19.0	19	18.5	74	37.7	113	
15.0	15	17.5	70	20.0	60	
-	-	5.0	20	4.3	13	
100	100	100	400	100	300	
						-15

%26.3 (15)

%28.6

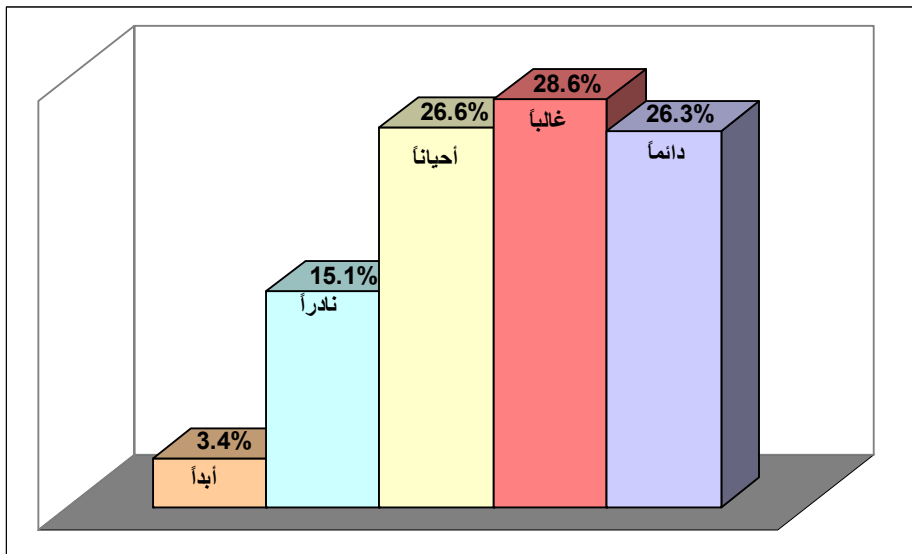
%3.4

%15.1

%26.6

(18)

(15)



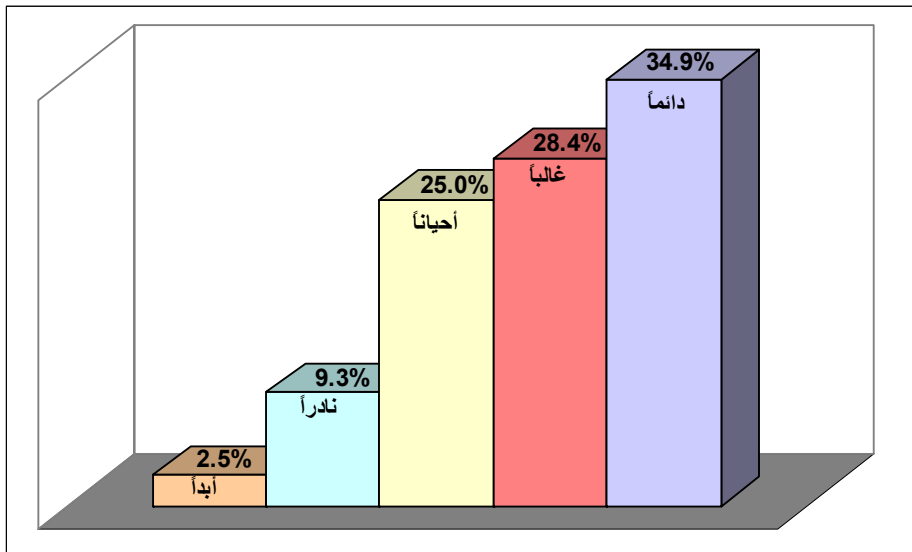
(18)

%		%		%		
36.0	36	35.8	143	10.3	31	
37.0	37	25.5	102	30.0	90	
20.0	20	21.3	85	36.0	108	
7.0	7	13.3	53	20.3	61	
-	-	4.3	17	3.3	10	
100	100	100	400	100	300	
						-16

%34.9 (16)

%28.4  
%2.5                      %9.3                      %25  
(19)

(16)



(19)

%		%		%		
<b>36.0</b>	<b>36</b>	<b>47.5</b>	<b>190</b>	<b>17.7</b>	<b>53</b>	
<b>37.0</b>	<b>37</b>	<b>27.0</b>	<b>108</b>	<b>27.3</b>	<b>82</b>	
<b>20.0</b>	<b>20</b>	<b>17.8</b>	<b>71</b>	<b>36.3</b>	<b>109</b>	
<b>6.0</b>	<b>6</b>	<b>4.8</b>	<b>19</b>	<b>16.3</b>	<b>49</b>	
<b>1.0</b>	<b>1</b>	<b>3.0</b>	<b>12</b>	<b>2.3</b>	<b>7</b>	
<b>100</b>	<b>100</b>	<b>100</b>	<b>400</b>	<b>100</b>	<b>300</b>	
						<b>-17</b>

%46.1 (17)

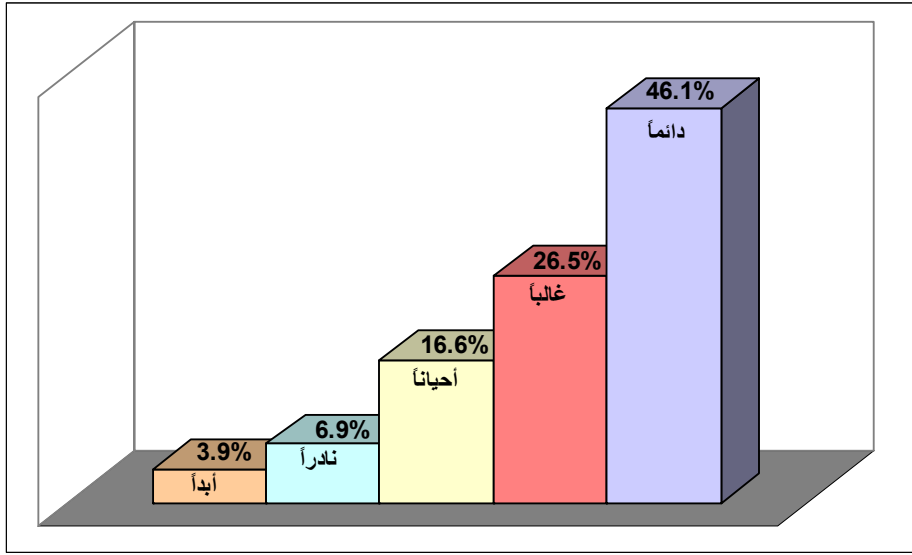
%26.5

%6.9  
(20)

%16.6

%3.9

(17)



(20)

%		%		%		
55.0	55	55.8	223	30.3	91	
26.0	26	25.3	101	28.3	85	
10.0	10	10.3	41	27.3	82	
7.0	7	3.3	13	11.7	35	
2.0	2	5.5	22	2.3	7	
100	100	100	400	100	300	
						-18

%47.3 (18)

%28.9

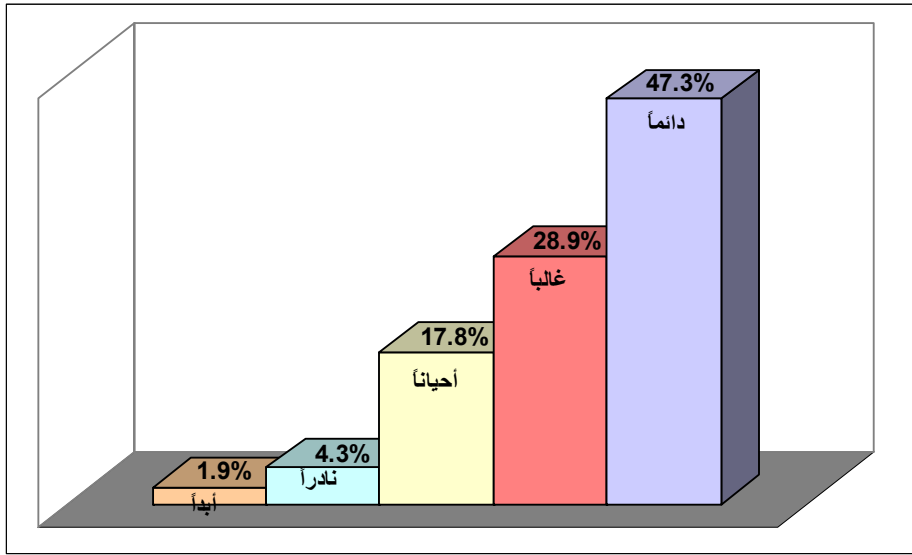
%1.9

%4.3

%17.8

(21)

(18)



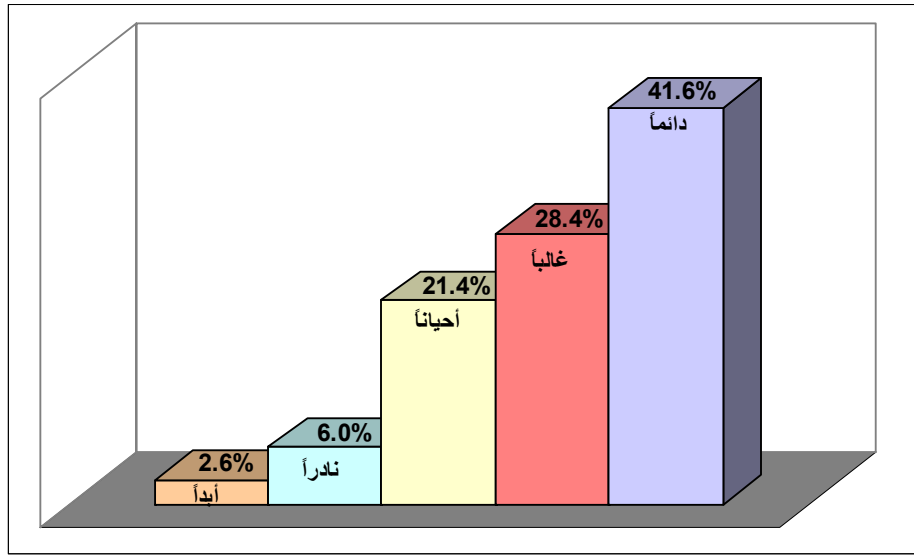
(21)

%		%		%		
<b>61.0</b>	<b>61</b>	<b>61.8</b>	<b>247</b>	<b>23.3</b>	<b>70</b>	
<b>23.0</b>	<b>23</b>	<b>24.0</b>	<b>96</b>	<b>37.3</b>	<b>112</b>	
<b>12.0</b>	<b>12</b>	<b>11.0</b>	<b>44</b>	<b>28.7</b>	<b>86</b>	
<b>1.0</b>	<b>1</b>	<b>2.0</b>	<b>8</b>	<b>8.3</b>	<b>25</b>	
<b>3.0</b>	<b>3</b>	<b>1.3</b>	<b>5</b>	<b>2.3</b>	<b>7</b>	
<b>100</b>	<b>100</b>	<b>100</b>	<b>400</b>	<b>100</b>	<b>300</b>	
						<b>-19</b>

%41.6 (19)

%28.4  
 %2.6                      %6                      %21.4  
 (22)

(19)



(22)

						.
%		%		%		
53.0	53	56.0	224	18.7	56	
26.0	26	27.0	108	31.0	93	
17.0	17	13.3	53	33.7	101	
2.0	2	2.8	11	11.7	35	
2.0	2	1.0	4	5.0	15	
100	100	100	400	100	300	
						-20

%29.8 (20)

%18.3

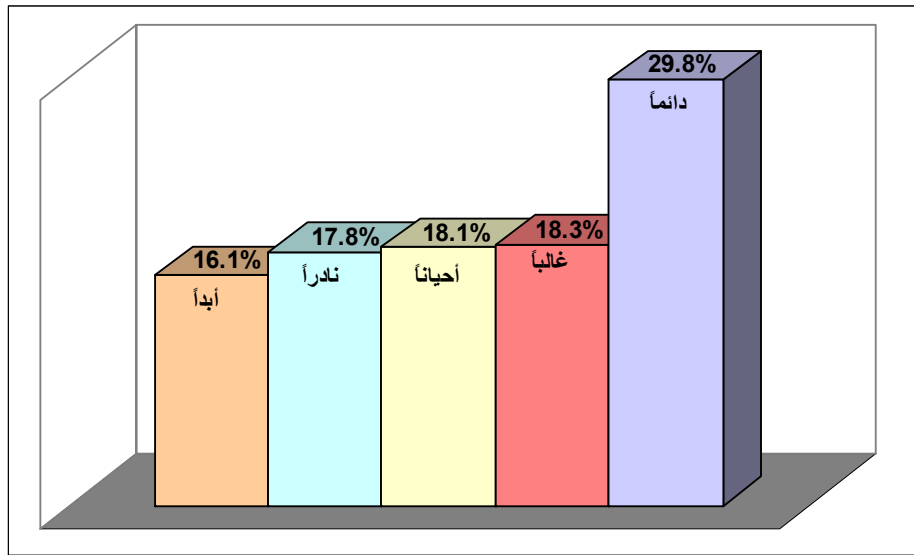
%17.8

%18.1

(23)

%16.1

(20)



(23)

%		%		%		
42.0	42	36.8	147	16.3	49	
15.0	15	14.0	56	25.0	75	
8.0	8	10.0	40	32.3	97	
22.0	22	16.0	64	18.7	56	
13.0	13	23.3	93	7.7	23	
100	100	100	400	100	300	
						-21

%39.4 (21)

%26.9

%7.3

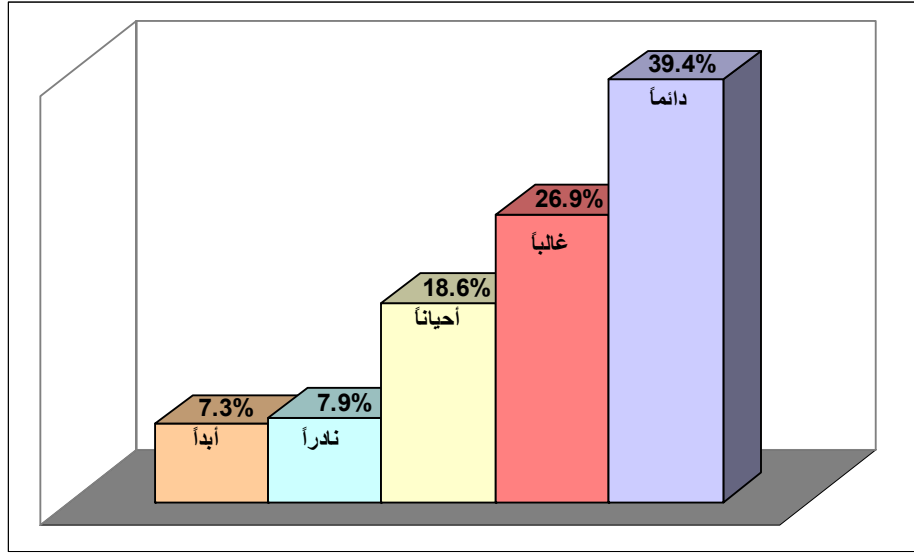
%7.9

%18.6

(24)



(21)



(24)

%		%		%		
51.0	51	49.8	199	21.7	65	
26.0	26	24.0	96	31.0	93	
12.0	12	11.3	45	30.7	92	
7.0	7	5.8	23	11.0	33	
4.0	4	9.3	37	5.7	17	
100	100	100	400	100	300	
						-22

%47.1 (22)

%16.5

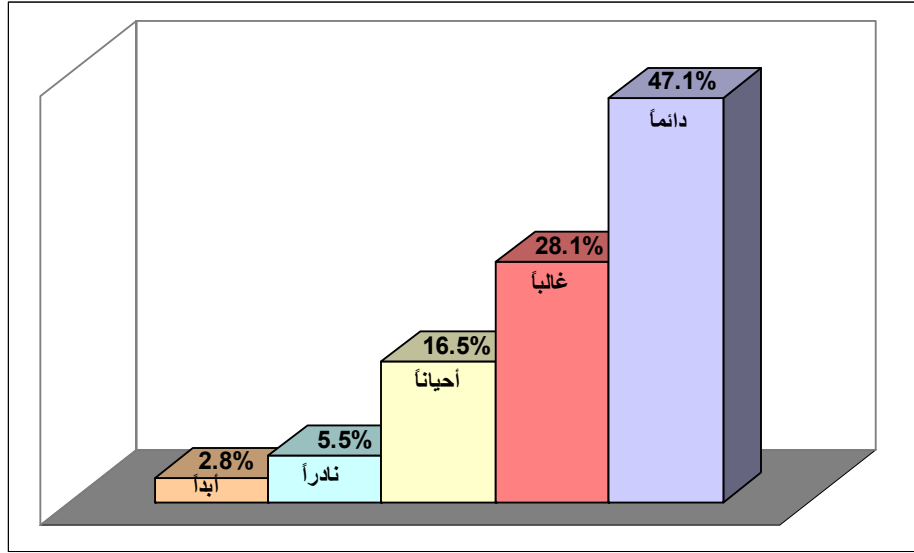
%28.1

%2.8

%5.5

(25)

(22)



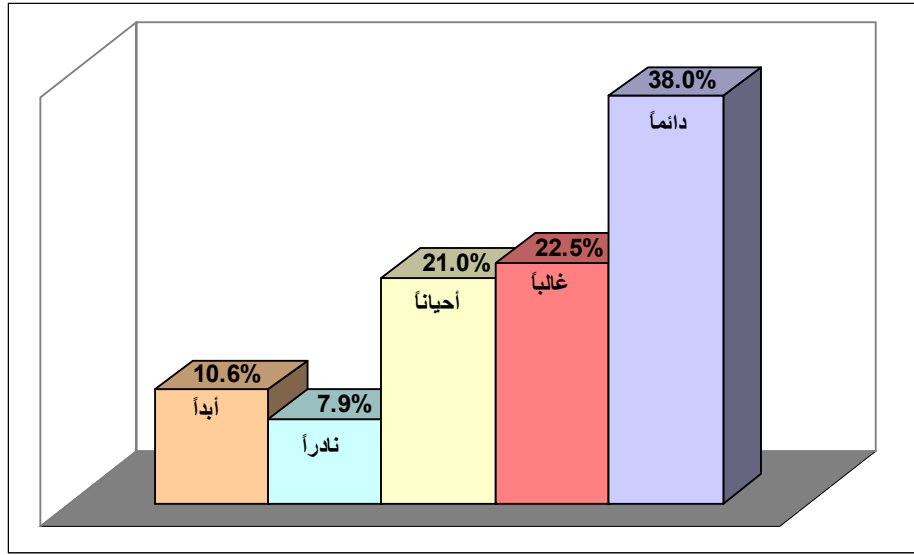
(25)

%		%		%		
66.0	66	61.0	244	22.3	67	
24.0	24	25.8	103	32.7	98	
5.0	5	9.3	37	30.0	90	
2.0	2	1.5	6	12.0	36	
3.0	3	2.5	10	3.0	9	
100	100	100	400	100	300	

-23

(26) %7.9                      %21                      %38 (23)                      %22.5                      %10.6

(23)



(26)

%		%		%		
60.0	60	41.0	164	26.7	80	
18.0	18	17.3	69	31.0	93	
18.0	18	17.0	68	27.3	82	
4.0	4	8.8	35	8.0	24	
-	-	16.0	64	7.0	21	
100	100	100	400	100	300	

%38.4 (24)

%8.8

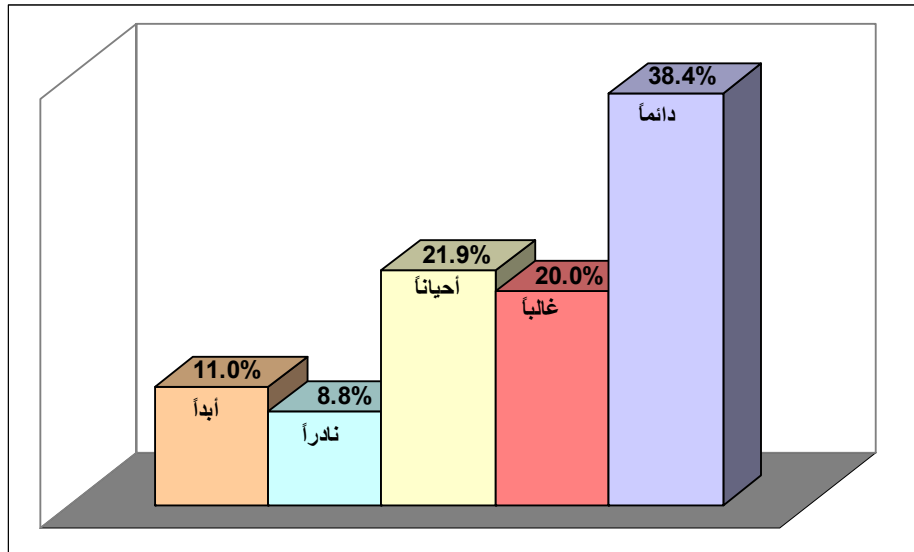
%21.9

%20

(27)

%11

(24)

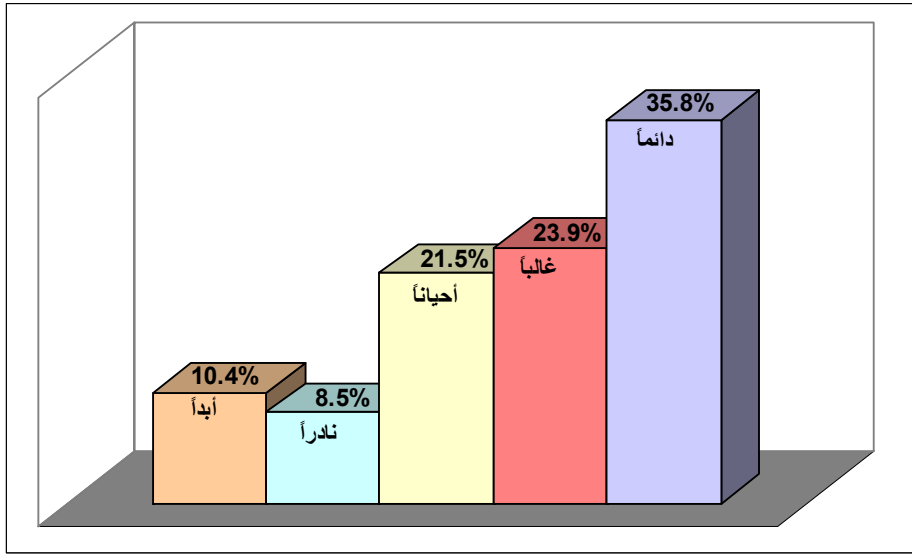


(27)

%		%		%		
48.0	48	41.0	164	31.7	95	
11.0	11	15.0	60	29.7	89	
23.0	23	17.3	69	27.7	83	
10.0	10	9.5	38	7.3	22	
8.0	8	17.3	69	3.7	11	
100	100	100	400	100	300	

(28) %21.5 %35.8 (25) %23.9 %10.4 %8.5

(25)



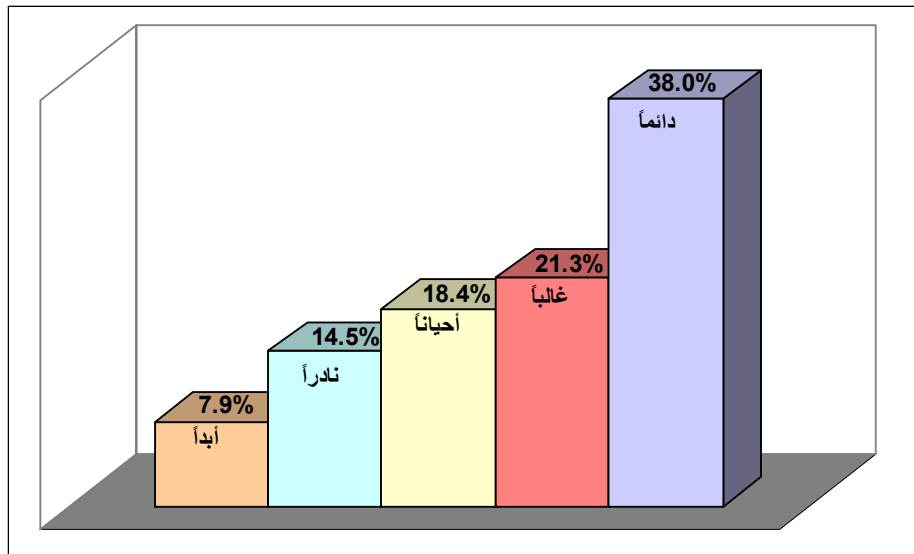
(28)

%		%		%		
47.0	47	38.3	153	28.7	86	
20.0	20	19.0	76	31.7	95	
22.0	22	17.8	71	26.3	79	
8.0	8	9.5	38	7.3	22	
3.0	3	15.5	62	6.0	18	
100	100	100	400	100	300	

(26)

%38 (26)  
 %21.3  
 %18.4  
 %7.9  
 %14.5  
 (29)

(26)

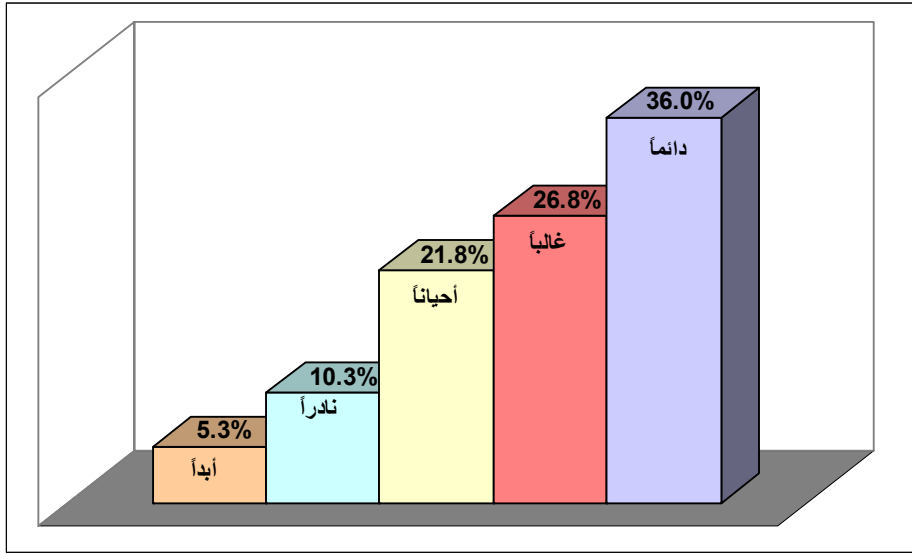


(29)

%		%		%		
<b>48.0</b>	<b>48</b>	<b>36.5</b>	<b>146</b>	<b>36.7</b>	<b>110</b>	
<b>18.0</b>	<b>18</b>	<b>19.0</b>	<b>76</b>	<b>25.3</b>	<b>76</b>	
<b>19.0</b>	<b>19</b>	<b>16.3</b>	<b>65</b>	<b>21.0</b>	<b>63</b>	
<b>9.0</b>	<b>9</b>	<b>16.5</b>	<b>66</b>	<b>13.7</b>	<b>41</b>	
<b>6.0</b>	<b>6</b>	<b>11.8</b>	<b>47</b>	<b>3.3</b>	<b>10</b>	
<b>100</b>	<b>100</b>	<b>100</b>	<b>400</b>	<b>100</b>	<b>300</b>	

%36 (27)  
 %26.8  
 %5.3                      %10.3                      %21.8  
 (30)

(27)

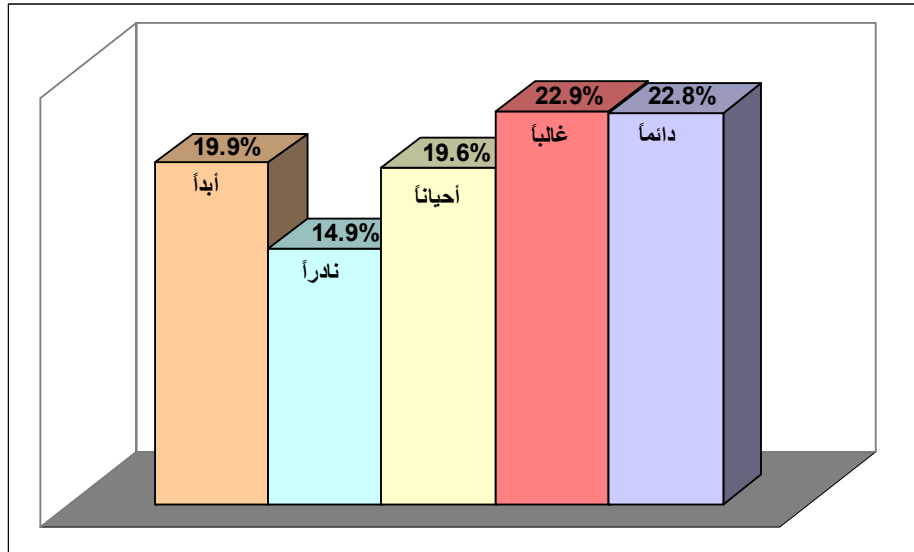


(30)

%		%		%		
53.0	53	45.5	182	17.7	53	
22.0	22	25.3	101	30.3	91	
15.0	15	17.3	69	30.0	90	
8.0	8	8.3	33	13.7	41	
2.0	2	3.8	15	8.3	25	
100	100	100	400	100	300	

%22.8 (28)  
 %22.9  
 %19.9 (31)                      %14.9                      %19.6

(28)



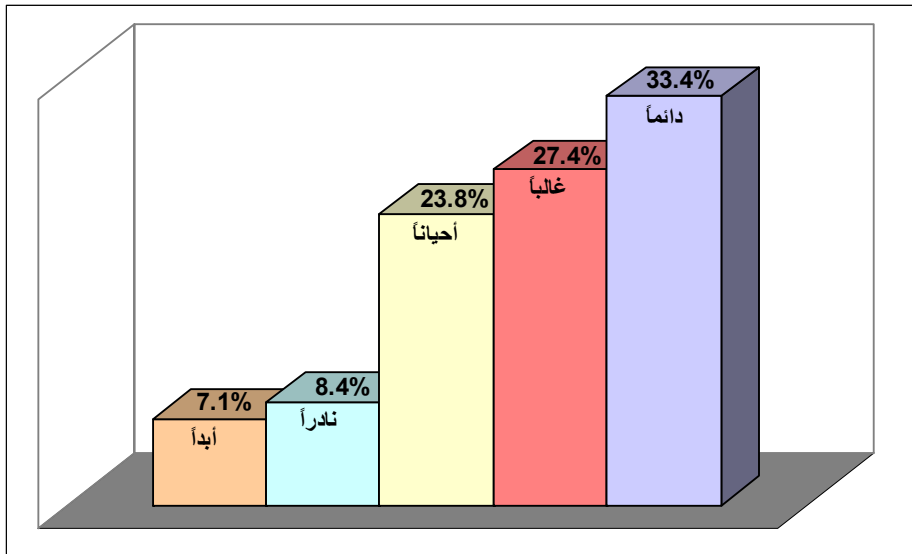
(31)

%		%		%		
21.0	21	23.5	94	22.3	67	
13.0	13	20.5	82	29.3	88	
16.0	16	13.5	54	29.0	87	
23.0	23	14.0	56	13.3	40	
27.0	27	28.5	114	6.0	18	
100	100	100	400	100	300	



(29) 33.4%  
 27.4% 7.1% 8.4% 23.8%  
 (32)

(29)



(32)

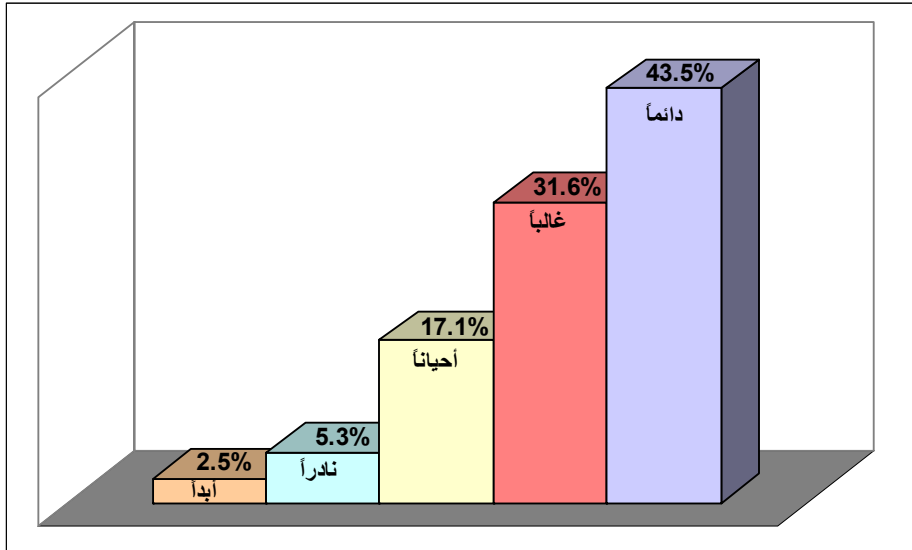
%		%		%		.
39.0	39	46.8	187	13.7	41	
35.0	35	26.0	104	26.7	80	
20.0	20	19.3	77	31.0	93	
3.0	3	3.5	14	16.7	50	
3.0	3	4.5	18	12.0	36	

100	100	100	400	100	300	
-----	-----	-----	-----	-----	-----	--

-30

%43.5 (30)  
 %31.6  
 %2.5                      %5.3                      %17.1  
 (33)

(30)



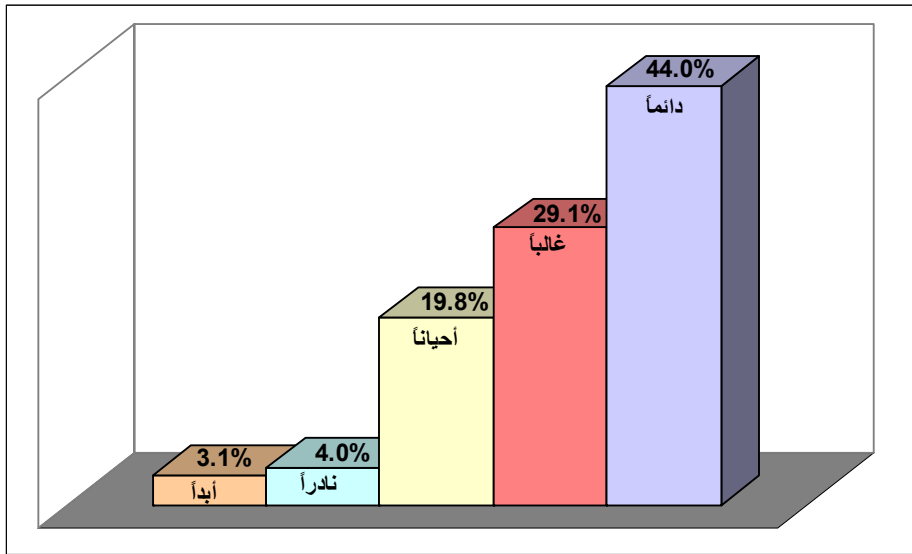
(33)

%		%		%		
55.0	55	55.5	222	23.7	71	
33.0	33	25.8	103	39.0	117	
10.0	10	12.0	48	26.3	79	

2.0	2	3.3	13	9.0	27	
-	-	3.5	14	2.0	6	
100	100	100	400	100	300	
						-31

%19.8  
 %44 (31)  
 %29.1  
 %3.1  
 %4  
 (34)

(31)



(34)

%		%		%		
64.0	64	53.8	215	24.3	73	
24.0	24	24.8	99	36.7	110	
10.0	10	15.8	63	28.3	85	
-	-	2.3	9	7.7	23	
2.0	2	3.5	14	3.0	9	



26.0	26	19.3	77	43.7	131	
5.0	5	9.5	38	21.7	65	
1.0	1	0.8	3	3.0	9	
1.0	1	2.8	11	2.7	8	
100	100	100	400	100	300	

-33

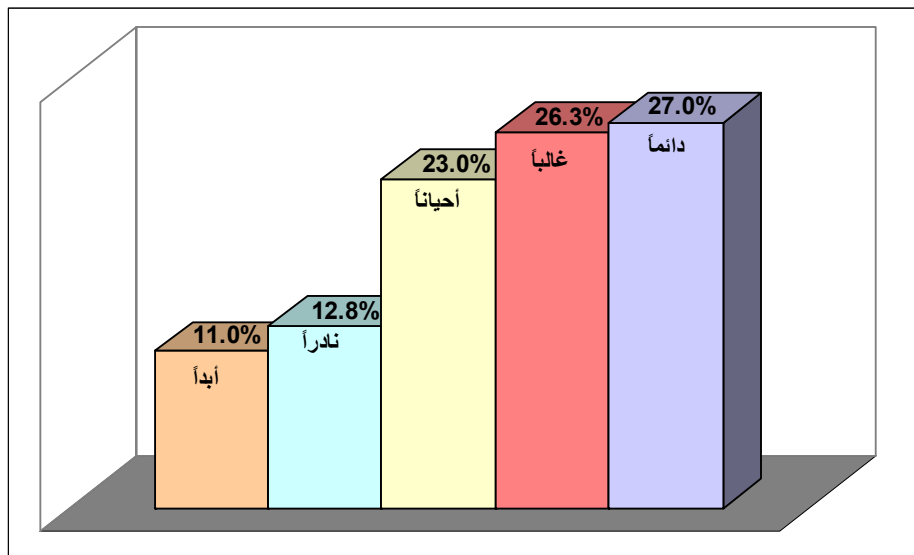
%27 (33)

%26.3

%11                      %12.8                      %23

(36)

(33)



(36)

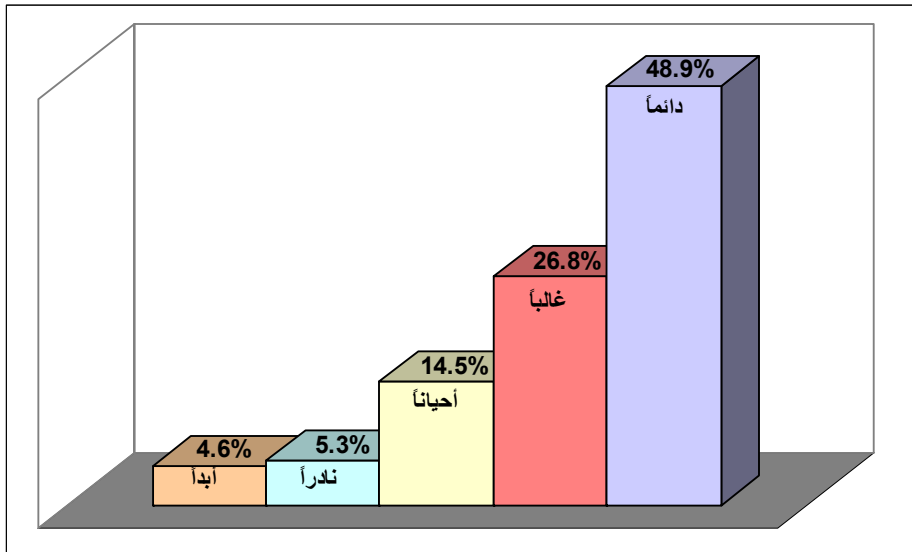
%		%		%	

32.0	32	35.3	141	14.3	43	
22.0	22	21.5	86	34.0	102	
26.0	26	18.5	74	28.0	84	
13.0	13	12.0	48	13.7	41	
7.0	7	12.8	51	10.0	30	
100	100	100	400	100	300	

-34

(34) 48.9%  
 26.8%  
 14.5% 5.3% 4.6%  
 (37)

(34)



(37)

				%	







%		%		%		
<b>66.0</b>	<b>66</b>	<b>60.5</b>	<b>242</b>	<b>32.7</b>	<b>98</b>	
<b>28.0</b>	<b>28</b>	<b>27.0</b>	<b>27</b>	<b>34.3</b>	<b>103</b>	
<b>5.0</b>	<b>5</b>	<b>9.0</b>	<b>36</b>	<b>24.0</b>	<b>72</b>	
<b>-</b>	<b>-</b>	<b>2.3</b>	<b>9</b>	<b>6.0</b>	<b>18</b>	
<b>1.0</b>	<b>1</b>	<b>1.3</b>	<b>5</b>	<b>3.0</b>	<b>9</b>	
<b>100</b>	<b>100</b>	<b>100</b>	<b>400</b>	<b>100</b>	<b>300</b>	
						<b>-37</b>

%46.9 (37)

%24.8

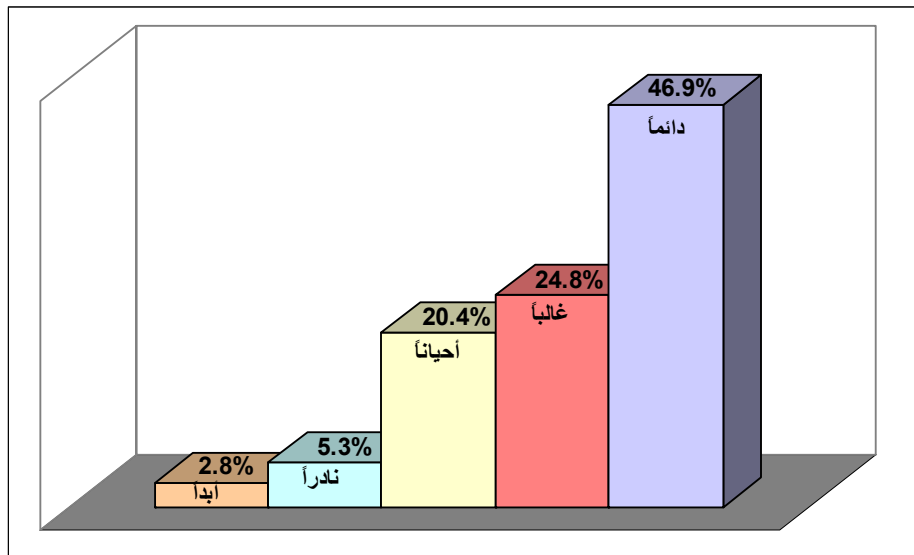
%2.8

%5.3

%20.4

(40)

(37)



(40)

%		%		%		
<b>53.0</b>	<b>53</b>	<b>56.8</b>	<b>227</b>	<b>31.7</b>	<b>95</b>	
<b>21.0</b>	<b>21</b>	<b>19.8</b>	<b>79</b>	<b>32.7</b>	<b>98</b>	
<b>22.0</b>	<b>22</b>	<b>15.8</b>	<b>63</b>	<b>26.0</b>	<b>78</b>	
<b>3.0</b>	<b>3</b>	<b>4.5</b>	<b>18</b>	<b>7.0</b>	<b>21</b>	
<b>1.0</b>	<b>1</b>	<b>3.3</b>	<b>13</b>	<b>2.7</b>	<b>8</b>	
<b>100</b>	<b>100</b>	<b>100</b>	<b>400</b>	<b>100</b>	<b>300</b>	

-38

%24.3 (41)

%24.7

%83

%5

%28

%11

%1

%17

%6

(41)

%		%		
<b>83.0</b>	<b>83</b>	<b>24.3</b>	<b>73</b>	
<b>11.0</b>	<b>11</b>	<b>24.7</b>	<b>74</b>	
<b>5.0</b>	<b>5</b>	<b>28.0</b>	<b>84</b>	
<b>1.0</b>	<b>1</b>	<b>17.0</b>	<b>51</b>	
<b>-</b>	<b>-</b>	<b>6.0</b>	<b>18</b>	
<b>100</b>	<b>100</b>	<b>100</b>	<b>300</b>	

-39

%4.7 (42)

%51.3

%21.3

%12.7

%10

(42)

%		.
4.7	14	
10.0	30	
12.7	38	
21.3	64	
51.3	154	
100	300	

-40

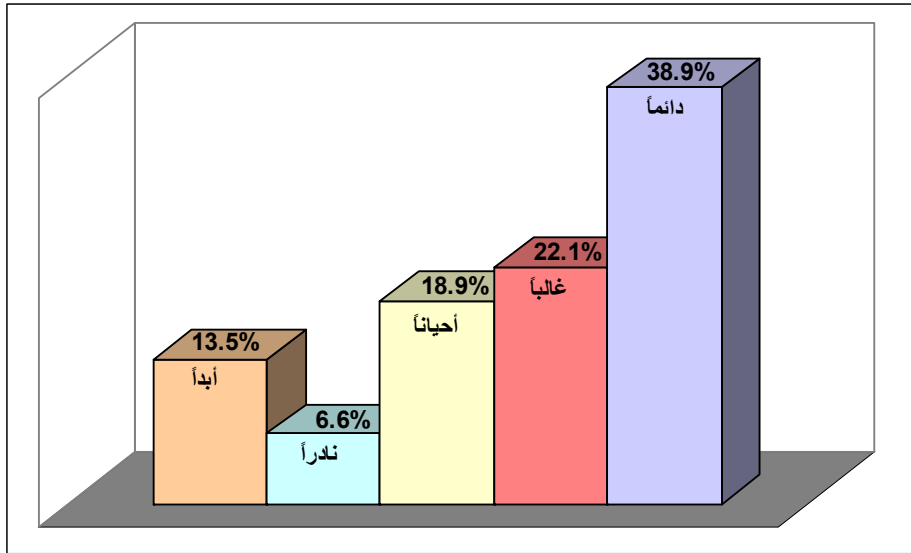
-

%38.9 (38)

%18.9      %22.1

%13.5      %6.6 (43)

(38)



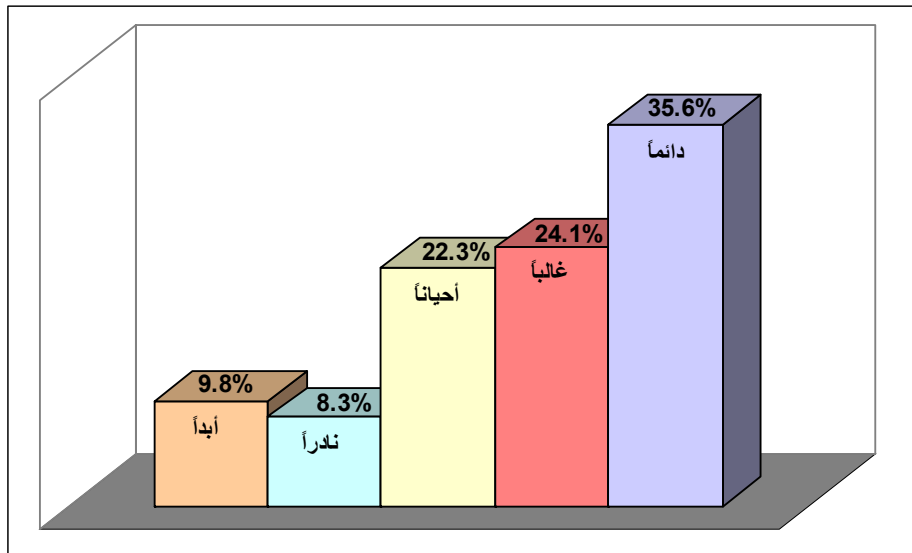


%		%		%		
58.0	58	57.3	229	31.0	93	
27.0	27	24.5	98	31.7	95	
12.0	12	9.5	38	17.7	53	
2.0	2	3.0	12	8.7	26	
1.0	1	5.8	23	11.0	33	
100	100	100	400	100	300	



%8.3      %22.3      %35.6 (40)  
 (45)      %24.1      %9.8

(40)



(45)

%		%		%		
42.0	42	44.5	178	21.7	65	
25.0	25	20.5	82	28.7	86	
30.0	30	20.0	80	22.7	68	
2.0	2	6.5	26	12.7	38	
1.0	1	8.5	34	14.3	43	
100	100	100	400	100	300	
						-

(41)

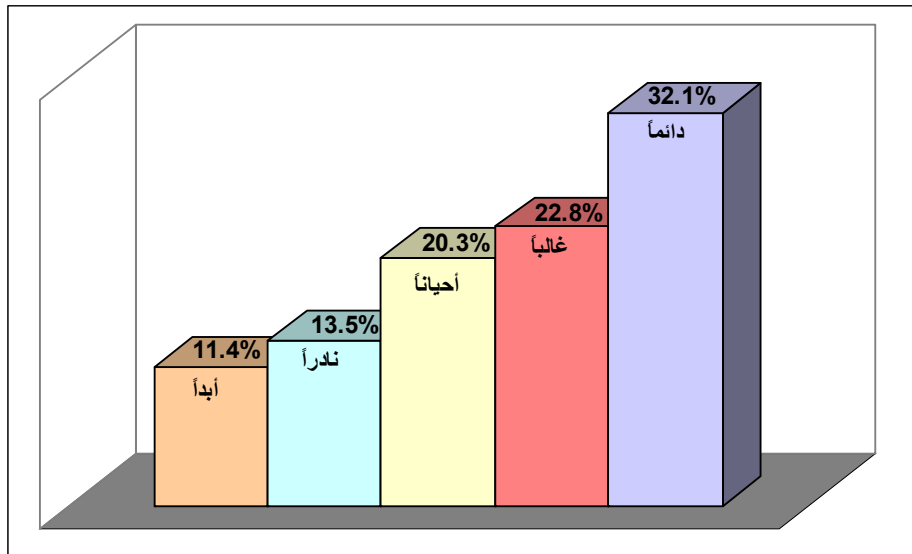
%32.1 (41)

%20.3      %22.8

                 %11.4

%13.5  
(46)

(41)



(46)

%		%		%		
19.0	19	47.0	188	16.7	50	
24.0	24	20.3	81	25.7	77	
34.0	34	16.5	66	20.7	62	
13.0	13	8.5	34	20.3	61	
10.0	10	7.8	31	16.7	50	
100	100	100	400	100	300	
						-

%35.1 (42)

%21.4

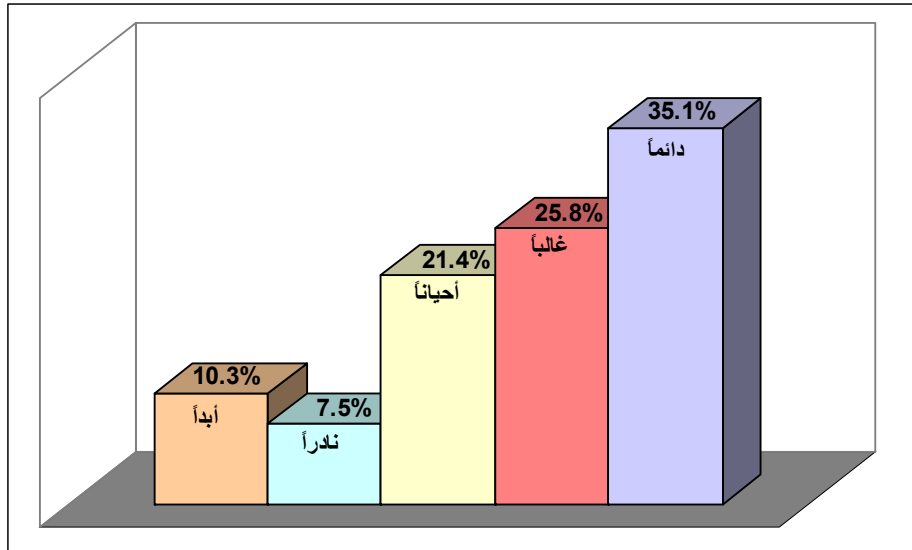
%25.8

(47)

%10.3

%7.5

(42)



(47)

%		%		%		
<b>51.0</b>	<b>51</b>	<b>39.0</b>	<b>156</b>	<b>24.7</b>	<b>74</b>	
<b>29.0</b>	<b>29</b>	<b>23.8</b>	<b>95</b>	<b>27.3</b>	<b>82</b>	
<b>14.0</b>	<b>14</b>	<b>21.3</b>	<b>85</b>	<b>24.0</b>	<b>72</b>	
<b>5.0</b>	<b>5</b>	<b>3.0</b>	<b>12</b>	<b>14.3</b>	<b>43</b>	
<b>1.0</b>	<b>1</b>	<b>13.0</b>	<b>52</b>	<b>9.7</b>	<b>29</b>	
<b>100</b>	<b>100</b>	<b>100</b>	<b>400</b>	<b>100</b>	<b>300</b>	

-

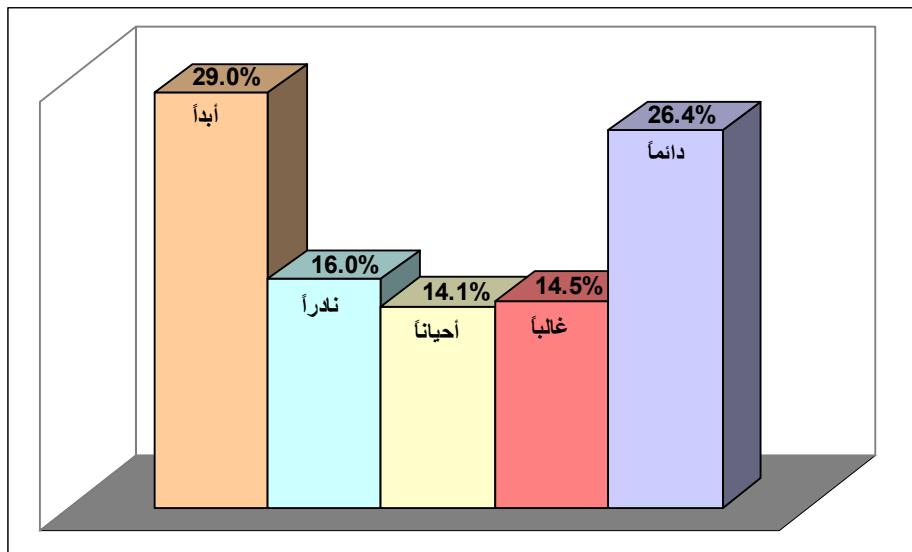
(43)

%26.4 (43)

%14.1      %14.5

(48)      %29      %16

(43)





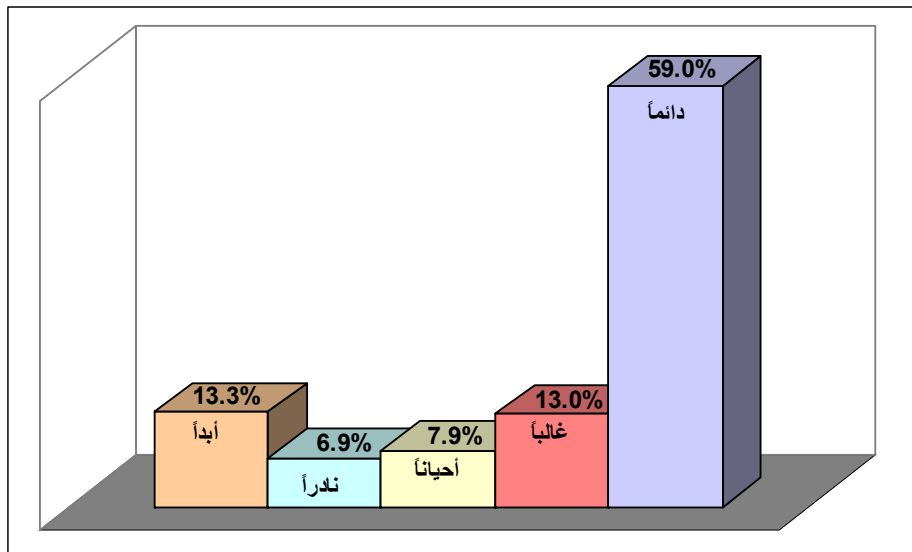


%		%		%		
39.0	39	46.8	187	34.0	102	
25.0	25	16.0	64	26.0	78	
19.0	19	14.3	57	20.3	61	
11.0	11	7.3	29	8.0	24	
6.0	6	15.8	63	11.7	35	
100	100	100	400	100	300	



%6.9 (50)      %7.9      %13      %59 (45)  
 %13.3

(45)



(50)

%		%		%		
<b>68.0</b>	<b>68</b>	<b>76.5</b>	<b>306</b>	<b>32.7</b>	<b>98</b>	
<b>6.0</b>	<b>6</b>	<b>8.3</b>	<b>33</b>	<b>21.7</b>	<b>65</b>	
<b>7.0</b>	<b>7</b>	<b>4.8</b>	<b>19</b>	<b>12.3</b>	<b>37</b>	
<b>7.0</b>	<b>7</b>	<b>2.5</b>	<b>10</b>	<b>12.7</b>	<b>38</b>	
<b>12.0</b>	<b>12</b>	<b>8.0</b>	<b>32</b>	<b>20.7</b>	<b>62</b>	
<b>100</b>	<b>100</b>	<b>100</b>	<b>400</b>	<b>100</b>	<b>300</b>	

**%61**

.

:

.

**%10**

:

.

**%5**

:

.





( ) : ( ) - ( )  
:  
▪  
▪  
▪  
▪